



Juanita Court

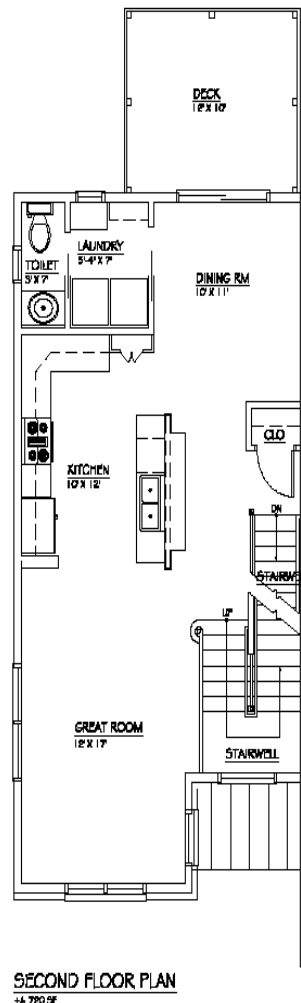
a new home community, offers 24 roomy townhomes with nearly 1900 sq. ft. of living area located on Lexington Avenue in Smyrna. All models consist of 3 stories, full basement, and garage ranging in price from \$184,900 - \$199,900. \$3500-\$6900 buyer closing cost for full price offer depending on unit chosen. Eligible for 100% USDA financing w/No DownPmt.. 1st time may qualify for \$7500 tax credit - expires in June!

Standard models include 9' ceilings on the 1st and 2nd floors, Great Room, Dining Room, Game Room, 2-3 bedrooms, 2 1/2 baths, and Laundry Room. Other options include a 1st Floor Master Bedroom, deck, and finished basements.

Juanita LLC offers affordable, quality construction for homebuyers in every walk of life. Close to Routes 1 and 13 with easy access to Wilmington, Philadelphia, NY, NJ, Baltimore, Dover, and Delaware beaches.

Also, convenient to Smyrna High School, elementary schools, library, shopping, colleges, and medical facilities.

JUANITA, LLC



- 9' Ceilings on 2nd Floor (Main living area)
- Great Room
- Dining Room
- Kitchen with Breakfast Bar
- 42" cabinets
- Laundry Room
- Decks and Patios are optional



Ruby Schaeffer, Realtor ERA Harrington Realty

516 Jefferic Boulevard
Dover, DE 19901
Office: (302) 736-0800
Direct: (302) 703-2412
Cell: (302) 423-4802
Fax: (302) 703-2524
E-Mail: schamg@comcast.net

Each ERA™ Office is Independently Owned

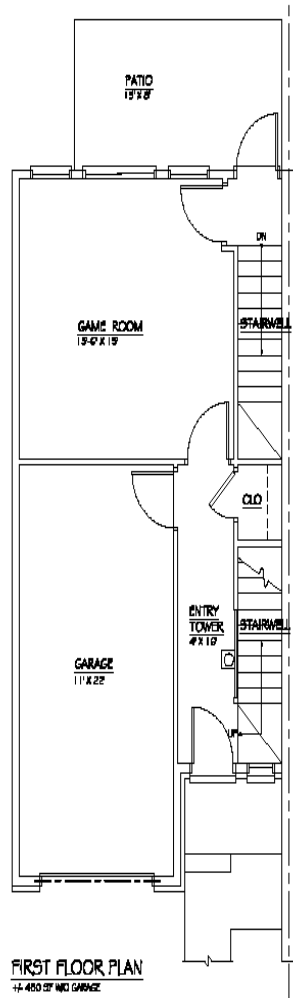
Directions to Juanita Court:

FROM THE NORTH take RT 1 South to S. Smyrna Exit 114, at light make left on RT 13. Turn right at next light onto Carter Rd., follow approx. 1.5 Mi. and make a right onto South Street, turn left on S. Howard Street, turn right on Lexington Ave. Model townhome is on right.

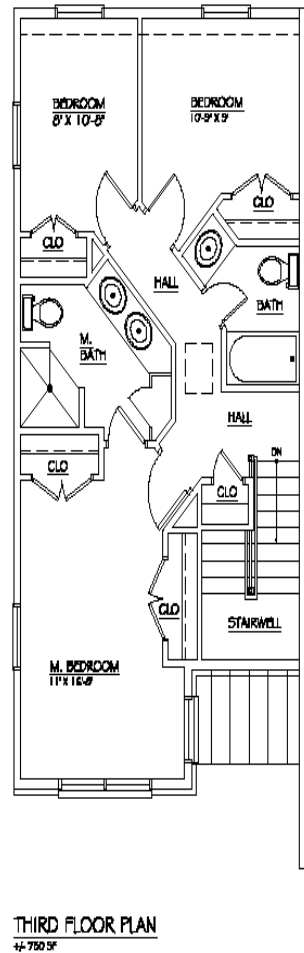
FROM THE SOUTH take RT 1 to S. Smyrna Exit 114, at light turn left onto RT 13. Turn right at next light onto Carter Rd., follow approx. 1.5 Mi. and turn right on South Street, make a left onto Lexington Ave. Model townhome is on right.

JUANITA, LLC

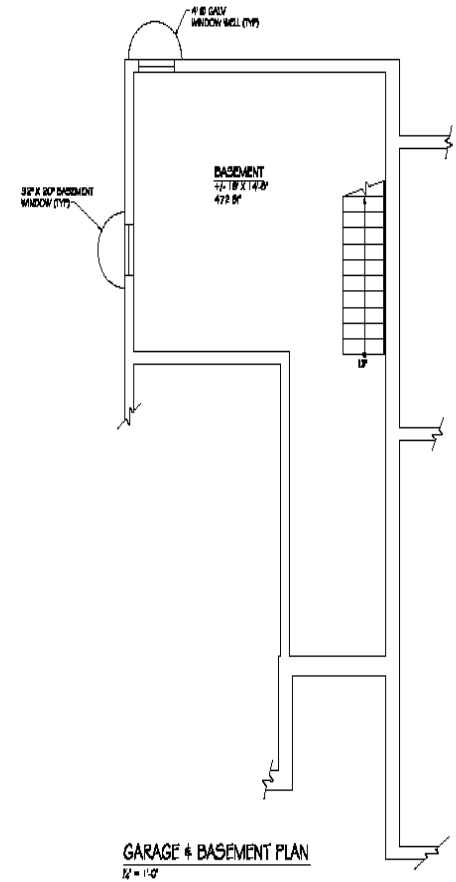
is an independent homebuilder dedicated to providing homebuyers with quality construction at an affordable price. Call our agent today for more information.



- 9' Ceilings on 1st floor (Entry level)
- Game Room/Family
- Powder Room
- One Car Garage
- Optional bedroom on main level



- 3 Bedrooms and 2 baths
- Master Bedroom with walk-in closet
- Master Bath with double sink vanity and roomy corner shower
- Optional 2 or 4 bedroom plan



- Full Basement offers extra storage
- Finished basement is an option

All room sizes are subject to change according to conditions or building requirements in the field and are not deemed reliable.